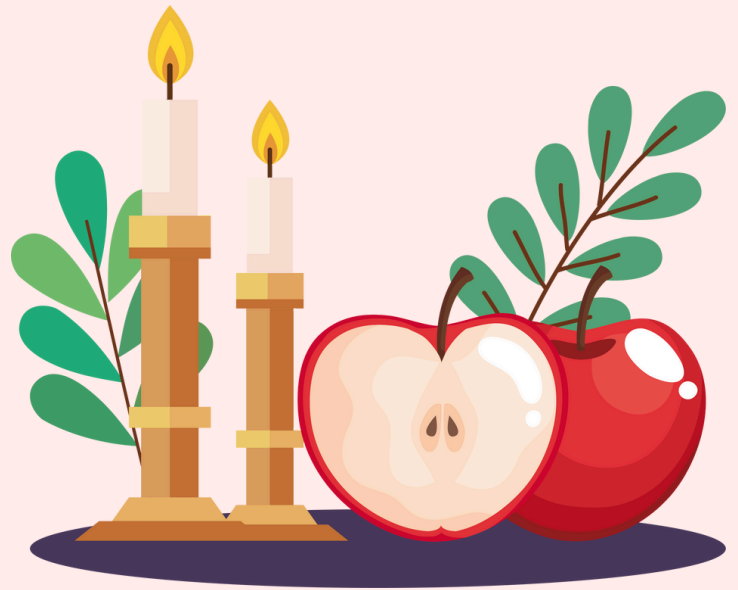


**JEWISH
AFFINITY
PROGRAM**

**HIGH
HOLIDAYS**



**Monday, Sept. 29, 2025
7:00 to 8:00 PM ET**

**Zoom Link -
Click [HERE](#) to
access the link:
tinyurl.com/3chx6cce**

Free, Zoom-based program for Jewish spiritual connection.
Co-led by Educator Bess A & Member Advocates Lior L and Emily J.
No need to pre-register. All are welcome!

Join our accessible program for an introduction and review of the
Rosh Hashanah, Yom Kippur, Sukkot, & Simchat Torah holidays,
along with prayer and song.

Questions? Contact programs@JCHAI.org



Community Education & Outreach

Fall 2025



Special Needs Trusts, ABA Accounts, & Medicaid Waivers

Tuesday, October 14, 2025 (7:00–8:15 PM)

JCHAI's free, **virtual** panel with information, resources, and Q&A for neurodiverse adults and caregivers. Featuring financial planning and legal professionals Bruce Sham and Howard Krooks.

Registration required.

Medicaid Waivers for Neurodiverse Adults: What, Who, Why, When, & How?

Wednesday, October 22, 2025

JCHAI's free, **virtual** panel with information, resources, and Q&A for neurodiverse adults and caregivers. Co-hosted by the Lower Merion Committee for Special Education (CSE).

Closed event for Lower Merion School District residents only.



JCHAI's Fall 2025 Open House

Wednesday, November 5, 2025 (7:00 – 8:15 PM)

A free, **virtual** opportunity to meet a number of our JCHAI member leaders, parents, our executive director, and program directors.

Registration required.

JCHAI programs and services begin with membership.
To learn more, please contact Carmen LeVere, Agency Manager:

✉ CLever@jchai.org

📞 (610) 922-2480

🌐 www.jchai.org



Come visit us at these upcoming events!

Fall 2025

MCIU Resource Fair

Date: Wednesday, October 15, 2025

Time: 6:00 PM – 8:00 PM

Location: Montgomery County Intermediate Unit
2 West Lafayette Street, Norristown, PA

25th Annual Secondary Transition Options & Resource Fair

Date: Thursday, October 30, 2025

Time: 5:30 PM – 7:30 PM

Location: Bucks County Intermediate Unit #22
705 N. Shady Retreat Road, Doylestown, PA 18901

JCHAI programs and services begin with membership.
To learn more, please contact Carmen LeVere, Agency Manager:

✉ CLevere@jchai.org

📞 (610) 922-2480

🌐 www.jchai.org

Life With JCHAI

NAVIGATION SERVICES

JCHAI's collaborative navigation results in plans tailored to each member's specific needs and aspirations.

Our Mission

JCHAI inspires and empowers adults with developmental differences or disabilities to imagine and fulfill their life aspirations and be valued contributors in the community.

Our member-centered model of care allows us to personalize our approach, giving them the tools and support they need to follow their passions, pursue interests, and reach their goals.



1:1 Coaching

JCHAI professionals design and teach targeted strategies for social, educational, vocational, and supported independent living goals.



Curriculum-Based Classes

JCHAI members develop skills in a fun, safe, and supportive environment. Subjects include career success, self-advocacy, wellness, and more.



Intentional Group Gatherings

JCHAI helps individuals build peer relationships with common goals and interests and strengthen their social connections.



Socials, Trips, and Outings

Whether we're enjoying events across the Philadelphia region or at one of our HUB centers, there's always something fun happening at JCHAI.

Click here or scan QR code to learn more:



www.jchai.org